

Task 7.3 - Guidelines, Pre-standards & Recommendations

Progress Status

INSIDER final workshop, 16-17 September, Avignon

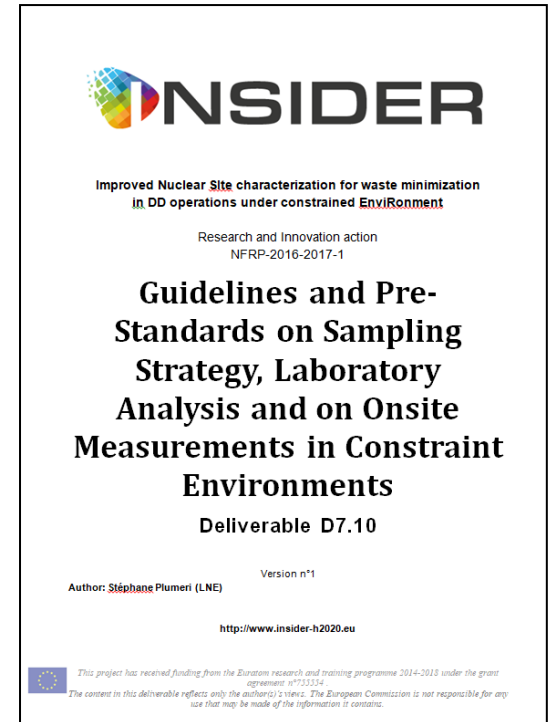
Stéphane Plumeri (LNE)



Task 7.3 - Guidelines, Pre-standards & Recommendations (LNE)

Mapping of existing standards linked to INSIDER's topics is achieved.

- Fields of interest:
 - Decommissioning and Dismantling of nuclear plants ;
 - Radiological characterization ;
 - Sampling strategy and statistical approach ;
 - Radioactive waste characterization.
- Standards taken into account: ISO, NF, AIEA documents...
- Subcontracted to AFNOR
- Mapping is presented in deliverable D7.10 issued on October 2020
 - ≈200 documents were identified
 - Focus on 14 standards is presented
 - Standards that are more closely linked to INSIDER's activities (see next slide)



Task 7.3 - Guidelines, Pre-standards & Recommendations (LNE)

Documents identified in D7.10

IAEA Safety Standards Series No. GSR Part 6: Decommissioning of Facilities

IAEA Safety Standards Series No. SSG-47: Decommissioning of Nuclear Power Plants, Research Reactors and Other Nuclear Fuel Cycle Facilities

IAEA Safety Standards Series No. SSG-49: Decommissioning of Medical, Industrial and Research Facilities

IAEA Technical Reports Series No. 486: Guidelines on Soil and Vegetation Sampling for Radiological Monitoring

ISO 18557: Characterisation principles for soils, buildings and infrastructures contaminated by radionuclides for remediation purposes

ISO 18589: Measurement of radioactivity in the environment — Soil — Part 1: General guidelines and definitions

ISO 18589-2: Measurement of radioactivity in the environment — Soil — Part 2: Guidance for the selection of the sampling strategy, sampling and pre-treatment of Samples

ISO 18589-7: Measurement of radioactivity in the environment — Soil — Part 7: In situ measurement of gamma-emitting radionuclides

ASTM E 1281: Standard Guide for Nuclear Facility Decommissioning Plans

ASTM E1892 – 15: Standard Guide for Preparing Characterization Plans for Decommissioning Nuclear Facilities

ASTM E2421: Standard Guide for Preparing Waste Management Plans for Decommissioning Nuclear Facilities

NF M60-780: Nuclear energy - Measurement of radioactivity in the environment - Bioindicators

FD M60-821: Nuclear energy - General considerations about the sampling and the measurements of radioactive effluents

FD M60-304: Nuclear energy - Nuclear installations, Processes and Technologies - Waste - Collection of the applicable documents for the characterization of radioactive waste and associated packages

Task 7.3 - Guidelines, Pre-standards & Recommendations (LNE)

- Identify INSIDER results that can have an impact and which one
- All guidelines and recommendations issued in INSIDER
 - D2.6 Good Practices in Waste Minimization in Decommissioning Projects (Delivered)
 - D2.7 Results summary of benchmarking exercises (M54)
 - D3.7 Statistical approach guideline (M53)
 - D4.1 Review of methods (Delivered)
 - D5.3 Recommended in situ measurement techniques for each constrained environment (Delivered)
 - D5.5 Guideline on the requirements for method implementation (M51)
 - D5.6 Guideline containing the methodology for method validation (M53)
 - D6.6 Recommendation guide (M54)
- Mapping is the starting point and now where do we want to go after all the work done on guidelines and recommendations ? -> Topic of open discussion on guides !
- Summarize everything in D7.15 “Recommendations” (M54)

THANK YOU

